

DELTA MOD-TECH® ROTARY CONVERTER

Installation of Delta VPN Remote Access Service

INSTALLATION OF DELTA (VPN 2) REMOTE ACCESS SERVICE

The VPN Remote access service allows Delta's service staff to connect to your machine's computer for real time troubleshooting and updates.

Note: The machine PC must be connected to the Internet to Install and Run remote access software.

<u>Section</u>	<u>Page</u>
Uninstall Flo-Chart Remote Access	1
Install on HMI Computer	2
Create a Bridge on Windows XP	3
Create a Bridge on Windows 7	4

UNINSTALLING FLO-CHART REMOTE ACCESS SERVICE (VPN 1)

Note: If you have the previous version of the Flo-Chart Remote Access Service you must uninstall it before installing the Delta VPN Remote Access Service.

1. Under *Control Panel > Add Remove Programs > Uninstall Flo-Chart Remote Access Service*
2. After that a manual uninstall may be required:
Start > Run > type "cmd"
3. In a cmd prompt change to the flo-chart remote access service directory on the hard drive by typing:
"cd \program files\flo-chart remote access service"
Press Enter
4. Type: "winvnc –remove"
Press Enter
5. "fhubclient –remove"
Press Enter

INSTALL ON HMI COMPUTER

Note: To install the VPN 2 Remote Access Service a bridge between the adapter and the local machine network card must be made. See the Create a Bridge on XP or Windows 7 above.

Note: If Flo-Chart Remote Access Service is already installed on the computer please follow the Instructions in *Uninstalling Flo-Chart Remote Access* below before Installing DeltaVPN.

1. Download: *DeltaVPNinstaller2.exe* to the machine PC.
2. Open the program. Click *Run*. The program will begin installing.
3. Click *Next > Install > Next > Finish*. (Figure 1) will appear, see below. Click on *Default Values*.
4. Click on *Default Values*.
5. For *Computer ID*, enter: *JOBxxxx* (xxxx = Delta job number). *If you do not know your job number contact Delta Industrial at 1-800-279-3358.
6. For *Machine Name*, enter a description of the computer. Example: *HMI 2498*
7. For *New Password*, enter: *DELTAxxxx* (xxxx = Delta job number).
8. Click *OK*.
9. Click *Yes to Start Service*.
10. Click *Finish* to complete the installation. The HMI is now ready for connection.
11. If you have problems installing this program, refer to the additional information below.



DELTA MOD-TECH® ROTARY CONVERTER

Installation of Delta VPN Remote Access Service

Machine ID

This is a unique identifier for the computer. The ID consists of two parts. The first part must be "JOB", the second part is the unique identifier. For example JOBXXXX (XXXX = Delta Job #)

Machine Name

This is a free form description of the computer. Anything may be entered here, minimum 5 characters.

Proxy Type

This drop down menu gives choices for the proxy type. If no proxy is required, leave this item as "None". 3 Types of proxy servers are supported:

Auto

The program will auto detect a proxy server.

HTTP

An HTTP type proxy. This is the type of proxy that would normally be placed in the HTTP section of the proxy settings of Internet Explorer. *socks or socks4* – A Socks version 4 proxy. This is the type of proxy that would be placed in the Socks section of the proxy settings of Internet Explorer.

Socks

A Socks version 5 proxy.

VNC Password

This password secures the vnc server that is part of the remote access package. This password will be required to gain access to the computer remotely. Entering a password into this item, replaces any previous password. Leaving this item blank leaves any previous password in effect. If "Password is Set" is displayed next to this field there is currently an active password.

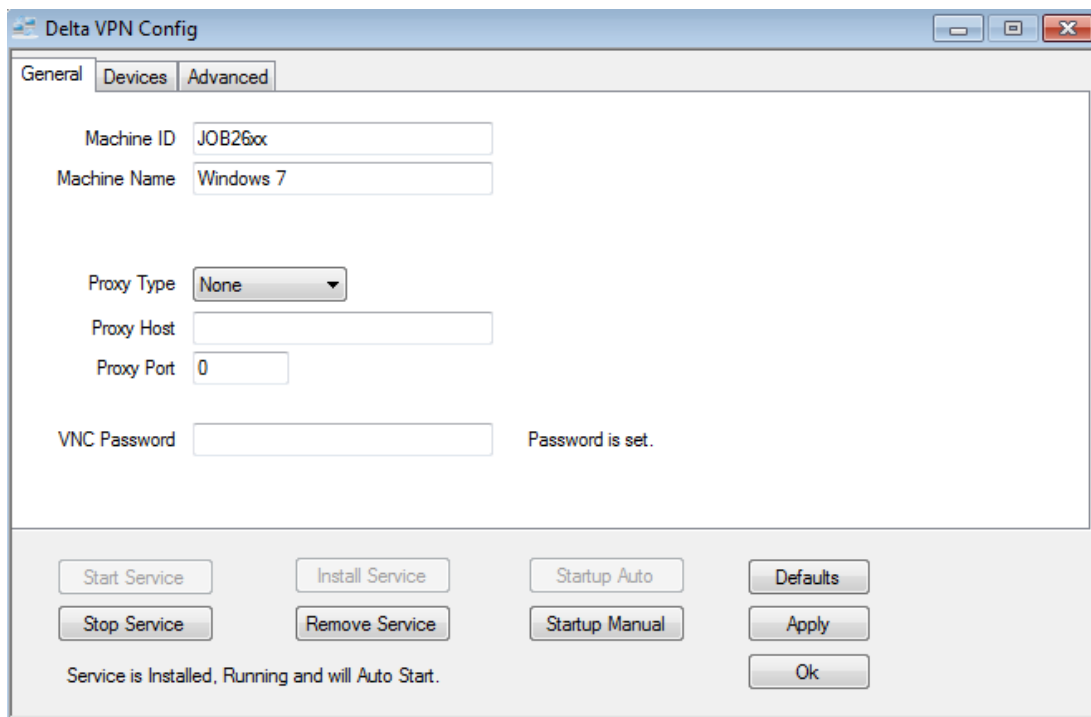


Figure 1



DELTA MOD-TECH® ROTARY CONVERTER

Installation of Delta VPN Remote Access Service

Keep this set to: DELTAxxxx (xxxx = Delta job number) to ensure Delta can connect for remote assistance. If the password is changed press Apply and restart the service.

CREATE A BRIDGE ON WINDOWS XP

1. Click Start > Control Panel > Network Connections.
2. Control-Click on the *TAP-Win32 Adapter* and the *Intel Network Adapter*, then Right Click, Choose *Bridge Connections*. (Figure 2)
3. After several seconds, *Network Bridge* will appear in *Network Connections*.
4. Right click on *Network Bridge*, choose *Properties*.
5. Click on *Internet Protocol (TCP/IP)*, then click *Properties*, (Figure 3).
6. In the properties page, click "Use the following IP address", then enter: 192.168.201.1 for *IP address* and 255.255.255.0 for *Subnet Mask*, (Figure 4). (Note Delta Tech Support may ask you to specify other numbers here)
7. Click *OK*, then *OK* Again.

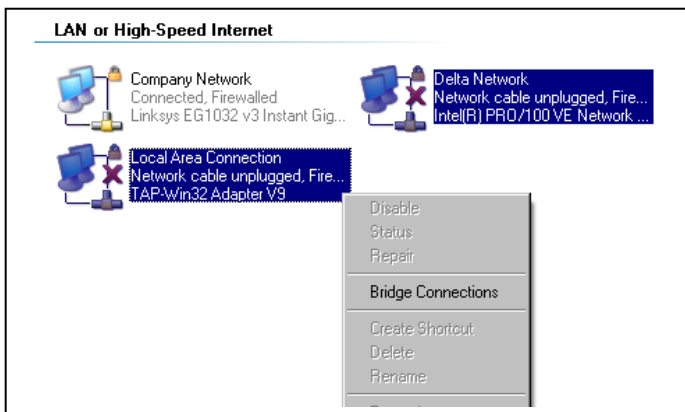


Figure 2

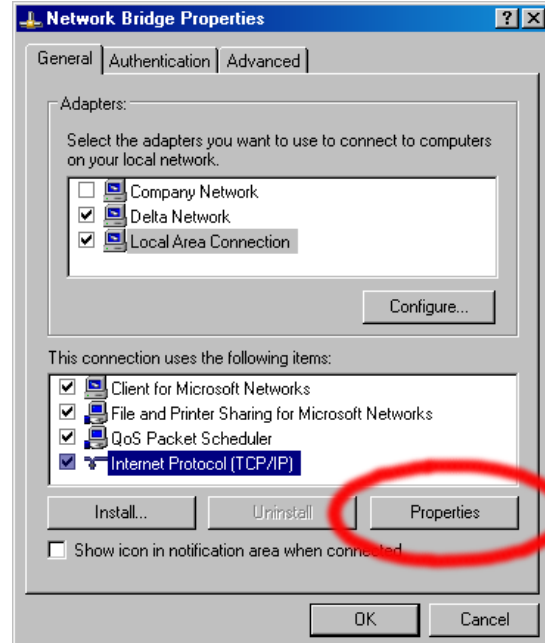


Figure 3

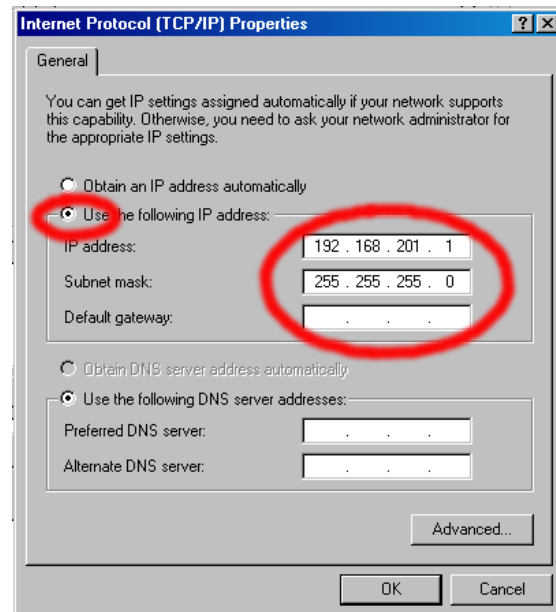


Figure 4



DELTA MOD-TECH® ROTARY CONVERTER

Installation of Delta VPN Remote Access Service

CREATE A BRIDGE ON WINDOWS 7

1. Click *Control Panel > Network and Internet > Network and Sharing Center > Change Adapter Settings*.
2. Click on the *TAP-Win32 Adapter* and then *Ctrl + Intel Network Connection*.
3. Right Click on the selected items and choose *Bridge Connections*. Figure 1
4. After several seconds, *Network Bridge* will appear in *Network Connections*.
5. Right-Click on *Network Bridge*, choose *Properties*.
6. Click on *Internet Protocol (TCP/IP)*, then click *Properties* (Figure 5).
7. In the properties page, click "Use the following IP address", then enter: 192.168.201.1 for *IP address* and 255.255.255.0 for *Subnet mask*, (Figure 6). (Note Delta Tech Support may ask you to specify other numbers here)
8. Click *OK*, then *OK* Again.

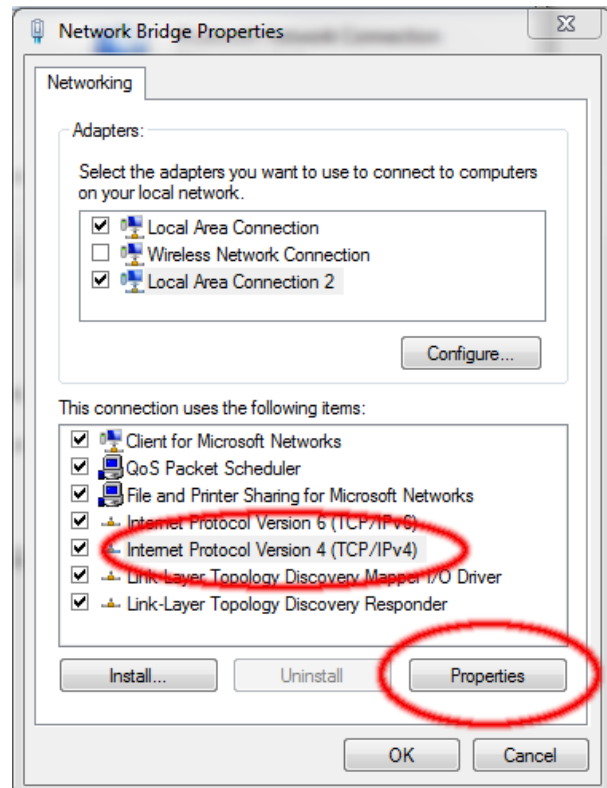


Figure 5

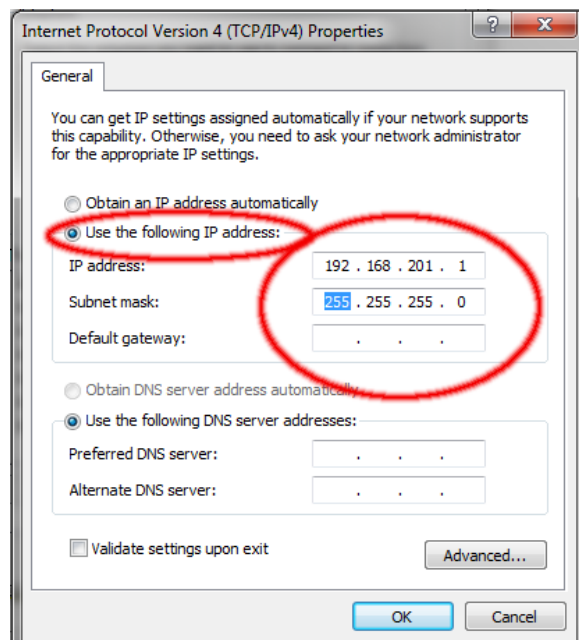


Figure 6

