

DELTA MOD-TECH® ROTARY CONVERTER

Installation of Flo-Chart Remote Access Service

INSTALL ON HMI COMPUTER

IMPORTANT: This instruction is for installation of VPN1 (WIN NT or 2000) only. For installation on WIN XP or WIN 7, use VPN2 instruction.

NOTE: The machine PC must be connected to the Internet to **Install** and **Run** remote access software.

1. Download: Flo-Chart Remote Access Service.exe to the machine PC.
2. Open the program. The program will begin installing.
3. Click the Next button 4 times. Figure 1 will appear, see below.
4. Click on Default Values.

5. For Computer ID, enter: DELTA.JOBxxxx (xxxx = Delta job number). *If you do not know your job number contact Delta Industrial at 1-800-279-3358.
6. For Computer Name, enter a description of the computer. Example: HMI 2498
7. For New Password, enter: DELTAxxxx (xxxx = Delta job number).
8. Click OK.
9. Click Yes to Start Service.
10. Click *Finish* to complete the installation. The HMI is now ready for connection.

If you have problems installing this program, refer to the additional information below.

Computer ID:

This is a unique identifier for the computer. The ID consists of two parts separated by a period "." The first part must be DELTA, the second part is the unique identifier. For example DELTA.JOBXXXX (XXXX = Delta Job #)

The screenshot shows the FHubConfig application window. The title bar reads "FHubConfig". The window contains several text input fields and a status indicator. The fields are: Computer ID (DELTA.2535), Computer Name (HMI_2535), Hub IP (198.137.142.10), Hub Port (50333), Connect Retry Time (60), Ping Time (900), Proxy (empty), and New Password (empty). Below the fields, the status is indicated as "Status Stopped". At the bottom of the window, there are two rows of buttons: the first row contains "OK", "Apply", "Install Service", and "Remove Service"; the second row contains "Cancel", "Default Values", "Start Service", "Stop Service", and "Restart Service".

Figure 1



DELTA MOD-TECH® ROTARY CONVERTER

Installation of Flo-Chart Remote Access Service

Computer Name:

This is a free form description of the computer. Anything may be entered here, minimum 5 characters.

Hub IP:

This is the IP address of the hub server. Keep the default value of 198.137.142.10. Click the *Default Values* button to automatically provide this item.

Hub Port:

This is the Port of the hub server. Keep the default value of 50333. Click the *Default Values* button to automatically provide this item.

Connect Retry Time:

The hub client attempts to maintain an always open TCP/IP connection to the hub server. When the connection drops, a new connection is created. This retry time is used to delay that new connection attempt. This time is in seconds. Click the *Default Values* button to automatically provide this item.

Ping Time:

The hub client sends a "PING" to the server periodically. This serves to check if the connection dropped as well as serve to keep the connection "alive", especially through proxies and firewalls. Some firewalls disconnect inactive connections automatically. This time is in seconds. The default value of 900 corresponds to 15 minutes. Click the *Default Values* button to automatically provide this item.

Proxy:

This item describes the proxy type, ip address and port. If no proxy is required, leave this item blank. The proxy item consists of 3 parts, separated by ":".

type:ip:port. Example: http:10.10.1.1:8080. This specifies an "http" proxy, on ip address 10.10.1.1 and port 8080.

3 Types of proxy servers are supported:

http – An HTTP type proxy. This is the type of proxy that would normally be placed in the HTTP section of the proxy settings of Internet Explorer.
socks or *socks4* – A Socks version 4 proxy. This is the type of proxy that would be placed in the Socks section of the proxy settings of Internet Explorer.

Socks5 – A Socks version 5 proxy.

New Password:

This password secures the vnc server that is part of the remote access package. This password will be required to gain access to the computer remotely. Entering a password into this item, replaces any previous password. Leaving this item blank leaves any previous password in effect. Keep this set to: DELTAxxxx (xxxx = Delta job number) to ensure Delta can connect for remote assistance.

Other useful information:

The hub client uses port 50333 to connect to the hub server. Connections for remote access use ports in the range of 51000 to 51099. All of these ports are outgoing only. No incoming ports are used. This information may be useful in order for a firewall administrator to "open" outgoing ports.

Some proxies, gateways and firewalls enforce a time limit on connections. If you see a computer appearing and disappearing from the list on the hub server, it is an indication of this problem. To keep the connection to the server constant, you may need to reduce the Ping Time to bring it within the time limit being enforced.

The FSSI Hub Client service maintains a connection to the hub server. It may be stopped when you do not wish to have a connection maintained. Of course remote access is effectively disabled when the service is not running.



DELTA MOD-TECH® ROTARY CONVERTER

Installation of Flo-Chart Remote Access Service

STARTING AND STOPPING THE HUB CLIENT AND SERVER.

Both the Hub Client and the VNC Server may be started and stopped from either Windows or from the Command Prompt.

Enabling or Disabling from Windows.

1. Right click on My Computer and Choose Manage
2. A Computer Management window will appear.
3. Expand the Services and Applications Item (click the +) Figure 2.
4. Click on Services
5. Find “FSSI Hub Client”
6. Right click on it, and Choose Start or Stop as needed.
7. To prevent the Hub Client from starting automatically, right click on the item and click Properties.

8. You can choose Automatic, or Manual as the Startup type. Figure 3.
9. The “VNC Server” service can be set in the same manner. Figure 4.

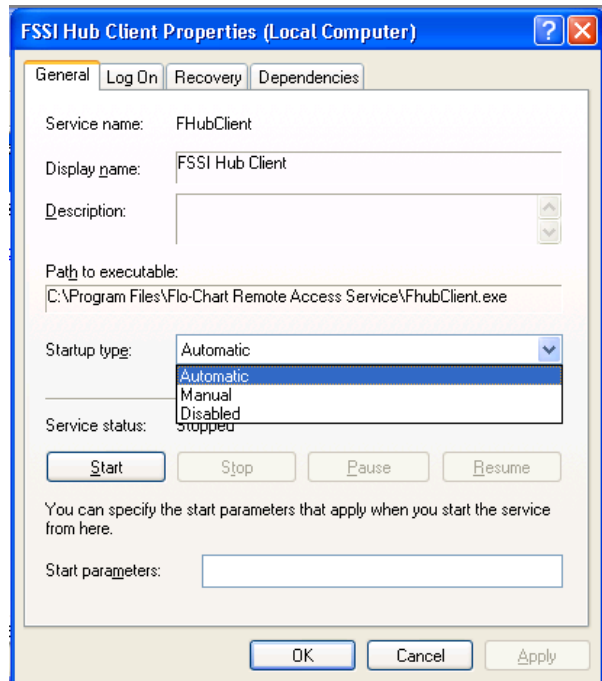


Figure 3

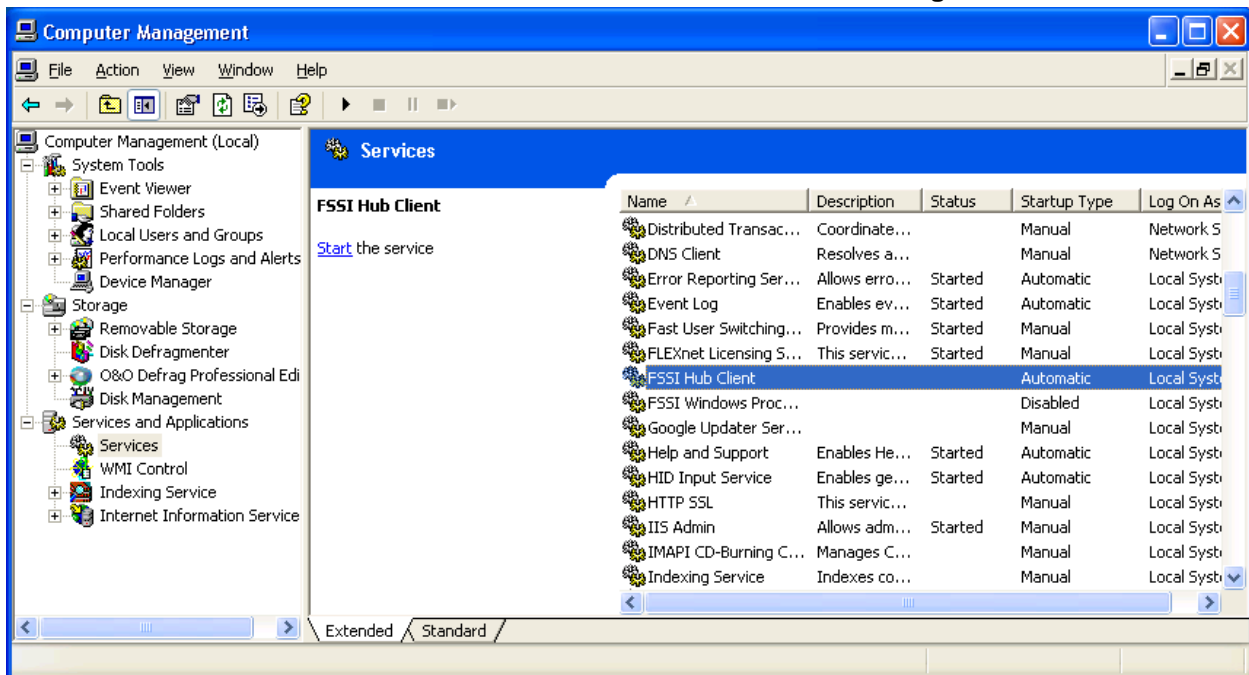


Figure 2



DELTA MOD-TECH® ROTARY CONVERTER

Installation of Flo-Chart Remote Access Service

ENABLING OR DISABLING FROM THE COMMAND PROMPT.

To stop the Hub Client and the VNC server, use the following commands:

```
NET STOP FHUBCLIENT  
NET STOP WINVNC
```

To start the Hub Client and the VNC server, use the following commands:

```
NET START FHUBCLIENT  
NET START WINVNC
```

Setting Automatic or Manual Startup type is not available from the command prompt. To choose Automatic or Manual Startup, use the Windows method described previously.

The command prompt start and stop commands work with either Automatic or Manual Startup types.

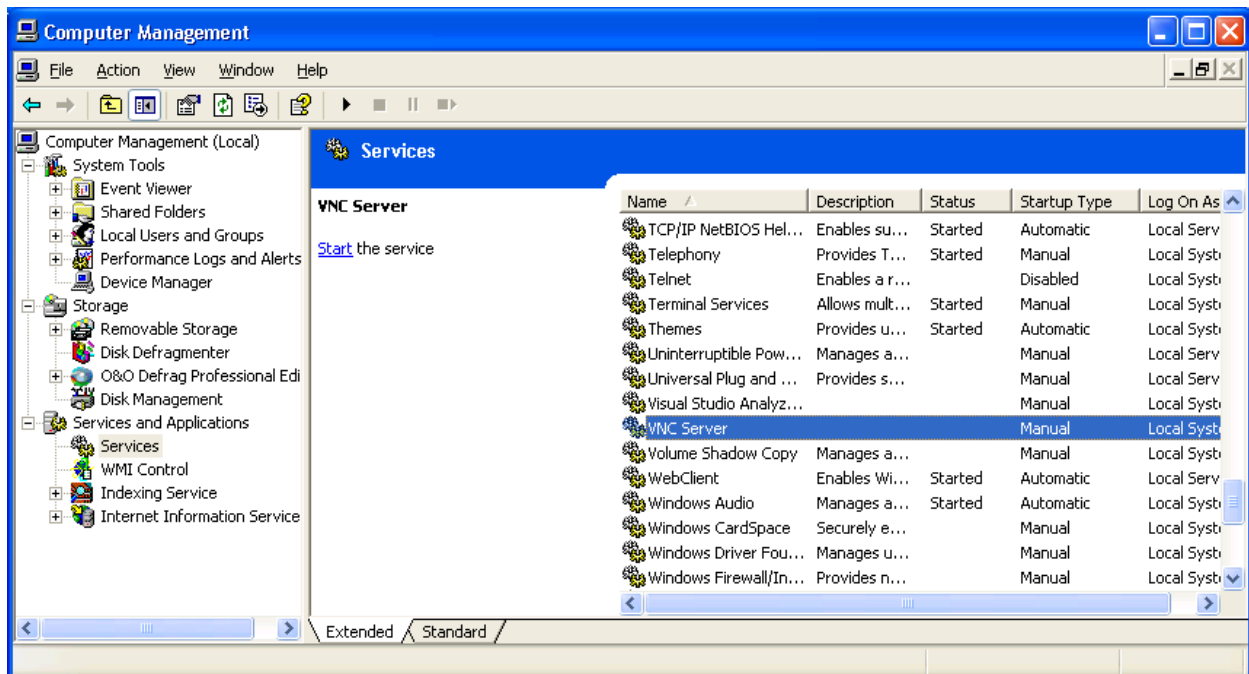


Figure 4

